



By appointment to The Royal Danish Court

morsø

SPARE PARTS PRICE LIST

Effective 3rd January 2012



CONTENTS

Page 3	1 st Line Spares List 2012
Page 4	Squirrel Series
Page 5	Panther Series
Page 6	Panther Cont.
Pages 7-15	Spare Parts Price List 2012



MODEL	PART NO.	SPARE PART DESCRIPTION	SRP (EXC VAT)	SRP (EXC VAT @ 20%)
1410 1430/1440 (Squirrel)	44203000	Riddling grate - Chrome Iron	28.94	34.73
	44203100	Grate frame - Chrome Iron	40.16	48.19
	44141100	Baffle plate - Chrome Iron	38.93	46.71
	44141400	Front grate - Chrome Iron	13.68	16.42
	790934	Back brick each (1)	9.29	11.15
	790935	Side brick each (2)	21.57	25.88
S10 -40	57100000	Upper Baffle	19.10	22.92
	57100100	Lower Baffle	31.39	37.66
	57100200	Side Brick	25.65	30.78
	57100300	Back Brick	35.48	42.57
	57103500	Full Set Vermiculite Baffles & Bricks	91.44	109.72
2100 Series (Panther)	44180800	Inner Back Plate 2110 (Original Panther) - Chrome Iron	41.91	50.29
	44183100	Inner Back Plate 2130 - Chrome Iron	51.56	61.88
	34184000	Inner Back Plate 1809 - Chrome Iron	90.15	108.17
	44182800	Riddling grate (Petal Style)- Chrome Iron 2110 (Original Panther)	36.65	43.98
	44162500	Riddling grate (Grid Style) - Chrome Iron	41.74	50.09
	44132200	Grate frame - Chrome Iron	55.42	66.50
	54211300	Baffle plate - Chrome Iron for 1809 & 2110 (Original Panther)	34.02	40.82
	54211400	Baffle plate - Chrome Iron for 2130	35.59	42.70
	44180721	Front grate - Chrome Iron	11.23	13.47
	790920	Side brick each (2)	14.36	17.23
3110/3140 (Badger)	44310900	Riddling grate (Petal Style) - Chrome Iron	41.39	49.66
	34311500	Intermediate Grate Frame	99.62	119.54
	34311100	Baffle plate - Chrome Iron	53.84	64.61
	34341400	Baffle access door - Chrome Iron	13.51	16.21
	79311000	Side brick each (2)	21.93	26.31
	79311100	Back brick each (2)	11.41	13.69
3112/3142 (EN Badger)	44310900	Riddling grate (Petal Style) - Chrome Iron	41.39	49.66
	34311500	Intermediate Grate Frame	99.62	119.54
	34313400	Upper baffle plate - Chrome Iron	35.84	43.00
	34313600	Baffle access door	18.07	21.68
	79311300	Side brick vermiculite each (2)	22.13	26.56
	79311400	Back brick vermiculite	19.58	23.49
3410/3440 (Owl)	44162500	Riddling grate (Grid style) - Chrome Iron	41.74	50.09
	44132100	Grate frame - Chrome Iron	62.79	75.35
	44341000	Baffle plate inc tertiary air - Chrome Iron	102.37	122.85
	34341400	Baffle access door - Chrome Iron	13.51	16.21
	34342000	Front grate - Chrome Iron	16.31	19.57
	79341000	Rear Side brick each (2)	7.36	8.83
	79341100	Front side brick each(2)	13.33	15.99
	79341200	Back brick each (1)	5.97	7.16
6100 Wood burner	79610500	Baffle Lower - Vermiculite	18.07	21.68
	79610600	Baffle Upper - Vermiculite	12.04	14.45
	79610200	Side brick R/H - Vermiculite	18.07	21.68
	79610300	Side brick L/H - Vermiculite	18.07	21.68
	79610400	Back brick - Vermiculite	9.03	10.84
	Ø4	44203300	Riddling grate - Chrome Iron	30.11
33000200		Coal insert - Chrome Iron	68.50	82.20
33006000		Upper baffle plate - Chrome Iron (Heating shield)	18.97	22.77
33005800		Baffle plate - Chrome Iron	33.12	39.75
79007000		Side brick each (2)	11.82	14.19
79006900		Back brick each (2)	7.12	8.55
Ø6		44162500	Riddling grate - Chrome Iron	41.74
	33000400	Coal insert - Chrome Iron	50.05	60.06
	33002000	Upper baffle plate - Chrome Iron (Heating shield)	24.39	29.27
	33001100	Baffle plate - Chrome Iron	57.00	68.40
	79001200	Side brick each (2)	16.63	19.96
	79001000	Back brick each (2)	10.52	12.63
Ø8	44162500	Riddling grate - Chrome Iron	41.74	50.09
	33000400	Coal insert - Chrome Iron	50.05	60.06
	33008900	Upper baffle plate - Chrome Iron (Heating shield)	36.13	43.36
	33008800	Baffle plate - Chrome Iron	69.25	83.10
	79004800	Side brick each (2)	17.79	21.35
	79004700	Back brick each (3)	9.51	11.41

SALES OFFICE FAX: 01788 554411



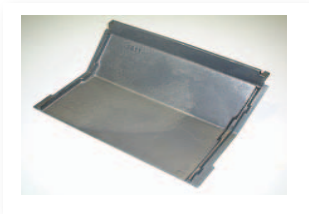
RIDDING GRATE CHROME IRON

Part Number 44203000
Grate Diameter 14cm



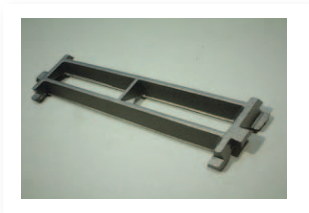
GRATE FRAME CHROME IRON

Part Number 44203100
Dimensions 24cm X 19.5cm



Baffle Plate Chrome Iron

Part Number 44141100
Width At Widest Point 33cm



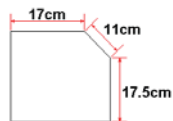
FRONT GRATE CHROME IRON

Part Number 44141400
Dimensions 25.7cm X 8cm



BACK BRICK

Part Number 790934
Dimensions 30cm X 15cm



SIDE BRICK (2 REQUIRED PER STOVE)

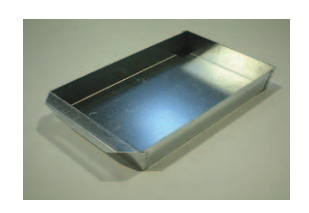
Part Number 790935
Main Dimensions 25cm X 25.7cm



GLASS KIT

All Glass Kits Include: 1 X 5mm Thick Glass, 4 X Glass Retaining Clips, 4 X Securing Screws And Self Adhesive Gasket.

Standard	1410	Part Number	62904000
Cleanheat	1430	Part Number	62904200
Convactor	1440	Part Number	62904100



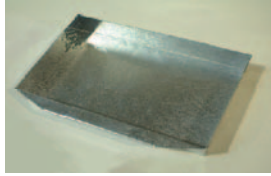
ASH PAN

Part Number 541405
Dimensions 18cm X 29.6cm Inc Handle

PANTHER IDENTIFICATION

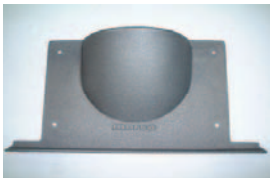
Does It Have An Air Control Slide Under The Ash Lip?
YES
 Is The Ash Lip Bolted On?
YES
 Model 2130

The Ash Lip?
NO
 Model 2110
NO
 Model 1809



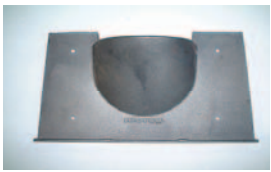
ASH-PAN

2110 / 2130	Part Number	541805
	Dimensions	29cm X 29.5cm
1809 / 2140	Part Number	54181400
	Dimensions	23cm X 35.5cm



INNER BACK PLATE

Part Number 44183100
 2130 And All Boiler Models



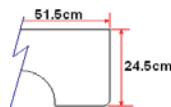
INNER BACK PLATE

Part Number 44180800
 2110 And 2140'S With Air Control Spinners



INNER BACK PLATE

Part Number 34184000
 1809 And 2140'S With Air Control Below Ash Lip



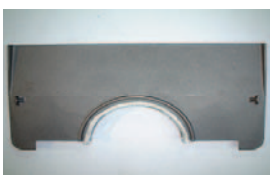
BAFFLE PLATE

Part Number 54211400
 2130 And 7'000 Btu Boiler Models



BAFFLE PLATE

Part Number 54211400
 Interchangeable With Above Baffle,
 Manufacturing Variation



BAFFLE PLATE

Part Number 54211300
 Model 1809 And 2110



BAFFLE PLATE

Part Number 44182100
All Models Of 2140 Convector



RIDDLING GRATE CHROME IRON (GRID STYLE)

Part Number 44162500
Grate Diameter 20cm Diameter
All Boiler Models 1809 / 2130 And 2140'S
With Air Control Below Ash Lip



RIDDLING GRATE CHROME IRON (PETAL STYLE)

Part Number 44182800
Dimensions 20cm Diameter
2110 And 2140'S With Air Control Spinners



GRATE FRAME CHROME IRON (GRID STYLE)

Part Number 44132200
Dimensions 29cm X 24.5cm
All Boiler Models 1809 / 2130 And 2140'S
With Air Control Below Ash Lip



GRATE FRAME CHROME IRON (PETAL STYLE)

Part Number 44182700
Dimensions 29cm X 24.5cm
2110 And 2140'S With Air Control Spinners



FRONT GRATE CHROME IRON

Part Number 44180721
Dimensions 45cm X 8cm
All Models



SIDE BRICK (2 REQUIRED PER STOVE)

Part Number 790920
Main Dimensions 25cm X 23
All Models



GLASS KIT

Part Number 62904200
All Models

SPARE PARTS SUGGESTED RETAIL PRICE LIST 3rd January 2012

All orders under £200.00 (Trade) are subject to a £9.00 handling/carriage charge

ITEM NO.	ITEM NAME	EXC (VAT PRICE)	INC (VAT @ 20% PRICE)
540614	Distance Tube	0.60	0.72
541082	Hinge pin 6 x 45 mm	1.57	1.89
541220	Air inlet cover	4.21	5.05
541221	Air inlet spacer, rear	1.57	1.89
541222	Air inlet arm, rear	8.42	10.11
541224	Air inlet arm, lower	11.05	13.26
541225	Pivot spacer, lower	1.93	2.32
541226	Air inlet link bar	1.57	1.89
541228	Air inlet limiter	2.80	3.36
541229	Air inlet arm, lower	12.10	14.52
541230	Air slide retainer, inner	12.10	14.52
541231	Air slide retainer, outer	12.10	14.52
541232	Air inlet arm, rear	8.42	10.11
541233	Air slide	1.57	1.89
541234	Pivot spacer, rear	1.93	2.32
541235	Pivot spacer, lower	1.93	2.32
541247	Air inlet limiter	2.72	3.26
541303	Right door complete for Morsø Lion 1510	180.11	216.14
541304	Left door complete for Morsø Lion 1510	111.54	133.84
541313	Top plate for Morsø Lion 1510	111.19	133.43
541350	Ash can for Morsø Lion 1510	31.75	38.10
541351	Riddling arm for Morsø Lion 1510	9.95	11.94
541352	Brick securing Bracket	13.68	16.42
541357	Ash can for Morsø Lion 1540	54.71	65.66
541361	Base Heat shield	22.80	27.36
541403	Hinge pin 1410/15/40	1.57	1.89
541404	Riddling arm	8.42	10.11
541405	Ash can for Morsø 1410	31.75	38.10
541421	Door complete for Morsø 1410 std	148.02	177.62
541422	Ash door complete for Morsø 1410 - 1430	90.33	108.40
541424	Inside back plate	105.38	126.46
541425	Rear Heat Shield	46.65	55.98
541426	Bottom Heat Shield	19.64	23.56
541431	Door for Morsø 1440 DS - seno.	167.12	200.54
541436	Top plate for Morsø 1410/15/40	69.28	83.14
541438	Air inlet link bar - 13 mm	1.57	1.89
541439	Distance tube	0.52	0.63
541441	Pivot spacer, rear - 15 cm	7.36	8.83
541445	Radiation shield, side 1440	7.02	8.42
541446	Radiation shield, back 1440	6.84	8.20
541460	Pull Switch complete	10.34	12.41
541563	Lattice Door complete for 1430	120.66	144.80
541609	Pin for Morsø 1610 door	0.70	0.84
541610	Ash can for Morsø 1610	34.55	41.46
541613	Riddling bar for Morsø 1630	4.56	5.47
541614	Securing bar for plate 1600/10	6.14	7.37
541638	Door complete for Morsø 1630	241.49	289.79
541639	Top plate assembly for Morsø 1630	109.44	131.32
541805	Ash can for Morsø 2100/4500/	24.37	29.25
541806	Convactor plate for Morsø 2140	24.73	29.68
541807	Riddling arm for Morsø 2100	3.69	4.42
541808	Hinge pin 6 x 35 mm	1.57	1.89
541827	Left door complete for Morsø all Panther 2100	165.60	198.73
541828	Right door complete for Morsø all Panther 2100	255.93	307.12
541830	Front grate fitting 2110/2130	5.61	6.73
541833	Top plate complete for Morsø 2110/30	93.19	111.83

SPARE PARTS SUGGESTED RETAIL PRICE LIST 3rd January 2012

All orders under £200.00 (Trade) are subject to a £9.00 handling/carriage charge

ITEM NO.	ITEM NAME	EXC (VAT PRICE)	INC (VAT @ 20% PRICE)
541841	Side legs panels for Morsø 2140	156.57	187.89
542056	Hinge pin	1.57	1.89
54211400	Baffle plate for Morsø 2130	35.60	42.72
542633	Cover for convection plate	1.41	1.69
542635	Distance tube - 20 mm	0.60	0.72
543495	Firedoor complete for Squirrel gas	132.94	159.53
543595	Ash door complete for Morsø Squirrel gas	97.34	116.81
545003	Pivot spacer - 18 mm	1.75	2.10
545006	Flat bar - fitting for baffle	1.57	1.89
545007	Distance tube - 8,5 mm	0.60	0.72
545008	Hinge pin 5 x 75	1.57	1.89
545009	Riddling arm 5000	1.57	1.89
545024	Back plate for Morsø 5000	61.38	73.66
545042	Door for Morsø 5000 DS	202.57	243.08
731125	Bolt 10 x 25	0.09	0.11
731140	Set bolt 10 x 40	0.70	0.84
731608	Black steel set screw 06 x 08	0.09	0.11
731610	Black steel set screw 6x10	0.09	0.11
731612	Screw for blanking plate	0.10	0.11
731616	Black steel set screw 6x16	0.10	0.11
731620	Black steel set screw 6x20	0.10	0.11
731625	Screw for smoke shield 06 x 25	0.09	0.11
731630	Bolt for bracket	0.13	0.15
731635	Screw for back wall	0.09	0.11
731640	Black steel set screw 6x40	0.09	0.11
731645	Black steel set screw 6x45	0.09	0.11
731665	Set bolt 06 x 65	0.12	0.15
731816	Split pin for handle 8 x 16	0.09	0.11
731820	Black steel set screw 8x20	0.09	0.11
731825	Bolt for legs	0.09	0.11
731830	Set bolt 08 x 30	0.24	0.29
731835	Bolt for draught valve	0.09	0.11
735005	Box nut M5	0.70	0.84
735006	steel box nut M6	0.09	0.11
735008	Steel box nut M8	0.09	0.11
735025	Steel box nut 1610 door	3.69	4.42
736106	Washer for base and top	0.09	0.11
736110	Washer 10 mm	0.09	0.11
736210	10 x 20 black washer	0.13	0.15
738612	Set screw 06 x 12	0.70	0.84
738615	set bolt 06 x 16	0.24	0.29
739308	CH Bolt 03 x 08	0.60	0.72
739405	Pinol screw 04 x 05	0.09	0.11
739520	Pinol screw 05 x 20	0.09	0.11
739606	Pinol screw M6 x 08	0.09	0.11
739630	Pinol screw 06 x 30	0.24	0.29
739640	Pinol screw 06 x 40	0.15	0.18
739903	Allen Key, 3 mm	3.74	4.49
742406	Machine bolt 04 x 06	0.09	0.11
742506	Machine screw 05 x 06	0.12	0.15
742508	Bolt for door glass	0.10	0.11
742512	Bolt for air conductor	0.09	0.11
742520	Bolt 05 x 20	0.09	0.11
742525	Bolt 05 x 25	0.09	0.11
742845	Bolt for draught valve	0.09	0.11
743590	Screw for porcelain handle	1.75	2.10

SPARE PARTS SUGGESTED RETAIL PRICE LIST 3rd January 2012

All orders under £200.00 (Trade) are subject to a £9.00 handling/carriage charge

ITEM NO.	ITEM NAME	EXC (VAT PRICE)	INC (VAT @ 20% PRICE)
743616	Screw for collar/box 1600	0.09	0.11
743625	Screw for flue collar	0.09	0.11
743650	Screw 6x50	0.15	0.18
743816	Bolt M8 x 16	0.10	0.12
745006	Box not 06 mm	0.09	0.11
746006	Brass washer 06 mm	0.15	0.18
746206	06 mm washer	0.15	0.18
752001	Boiler for Morsø 1510, lion 8000btus	221.27	265.53
752002	Boiler for Morsø 1510, lion 15000btus	221.27	265.53
752005	Boiler for 1410/1430, Squirrel 8000btus s/steel	193.33	232.00
752010	Boiler for Morsø 1630 34000btus	284.17	341.00
752015	Boiler for Morsø 2130, panther 7000btus	142.91	171.50
752016	Boiler for Morsø 2130, Panther 24000btus	177.99	213.59
752017	Boiler Baffle for Dove/Lion	7.95	9.53
752619	Riddling arm knob 1410/1510	7.72	9.26
752620	Riddling arm knob 5000	7.02	8.42
752621	Bush for riddling arm	6.84	8.20
752623	Space bush	1.57	1.89
752625	Door handle, stainless steel	45.16	54.20
752627	Door axle, stainless steel	21.08	25.29
752629	Bush for brass handle	22.80	27.36
790720	Door glass for Morsø 1610	34.90	41.88
790721	Door glass for Morsø 2110/40	36.55	43.87
790722	Door glass for Morsø 1610/1710	39.81	47.77
790724	Door glass for Morsø 1440	51.19	61.42
790725	Door glass for Morsø 1540	40.16	48.19
790726	Door glass for Morsø 1410/1126	29.44	35.33
790727	Door glass für Morsø 1510	38.40	46.08
790735	Door glass for Morsø 5000	123.29	147.95
790736	Door glass for Morsø 4500	72.61	87.13
790737	Door glass for Morsø 1630 Curv	105.38	126.46
790743	Clip for glass	0.11	0.13
790920	Side brick for Morsø 2100	14.36	17.23
790934	Back brick for Morsø 1410/30/40	9.29	11.15
790935	Side brick for Morsø 1410/30/40	21.57	25.88
790936	Side brick for Morsø 1610 *DIS	6.49	7.79
790937	Brick for Morsø 5000	12.10	14.52
790938	Side brick for Morsø 4500	27.36	32.83
790939	Baffle plate for Morsø 4500	17.54	21.05
790940	Side brick for Morsø 1710	26.65	31.98
790941	Back brick for Morsø 1710	26.65	31.98
790945	Baffle plate for Morsø 1710	36.13	43.36
790950	Back brick for Morsø 1510	21.22	25.47
790951	Side brick for Morsø 1510	27.36	32.83
790955	Side brick for Morsø 1540	31.57	37.88
790956	Back brick for Morsø 1540	45.78	54.93
791271	Door Handle latch	1.57	1.89
791290	Door catch	4.21	5.05
791291	Locking plate for 1610	1.93	2.32
791806	Locking ring	1.57	1.89
791864	05 x 26 knob	1.57	1.89
791868	Hinge pin 06x32	0.34	0.41
791869	Hinge pin 06x26	0.34	0.41
791891	Air slide washer	0.09	0.11
33000200	Coal Insert Ø4	68.50	82.20
33000400	Coal Insert Ø6 & Ø8	50.05	60.06

SPARE PARTS SUGGESTED RETAIL PRICE LIST 3rd January 2012

All orders under £200.00 (Trade) are subject to a £9.00 handling/carriage charge

ITEM NO.	ITEM NAME	EXC (VAT PRICE)	INC (VAT @ 20% PRICE)
33000500	Inner Grate Frame Ø6	53.03	63.64
33000900	Inner Grate Frame Ø8	79.21	95.05
33001100	Baffle Ø6	57.00	68.40
33002000	Heat shield cast Ø6	24.39	29.27
33005800	Cast Baffle Ø4	33.12	39.75
33006000	Heat shield cast Ø4	18.97	22.77
33008800	Cast Baffle Ø8	69.25	83.10
33008900	Heat shield cast Ø8	36.13	43.36
34184000	Inside back panel 2100	90.15	108.17
34311100	Baffle Plate 3100 DIN	53.84	64.61
34311500	Intermediate grate frame 3100	99.62	119.54
34313400	Upper baffle 3112/3142	35.84	43.00
34313600	Access Door 3112/3142	18.07	21.68
34340800	Inside top 3400	60.51	72.61
34341400	Access Door	13.51	16.21
34342000	Front bar 3400	16.31	19.57
34361100	Grate 3600	36.83	44.19
34361400	Fireplate side door 3600	32.09	38.51
34711800	Baffle 7110	23.94	28.73
44130121	Base plate for 1510 senotherm	66.82	80.19
44130800	Inside back plate Morsø 1540	152.76	183.31
44130900	Inside side plate for Morsø 1540	49.81	59.77
44131200	Outer Grate Frame for Morsø	71.38	85.66
44131421	Back plate for Morsø 1510	243.07	291.68
44131621	Outer side plate for Morsø 1510 with Lion	212.38	254.86
44131800	Air Conductor Morsø 1510/40	28.06	33.67
44131900	Front grate for Morsø 1510/40	23.14	27.77
44132021	Ash lip for Morsø 1510	99.44	119.33
44132100	Inner Grate frame for Morsø	62.79	75.35
44132200	Grate frame for Morsø 1540	55.42	66.50
44132500	Baffle plate for Morsø 1510	79.44	95.33
44132600	Baffle plate for Morsø 1540	71.03	85.24
44132700	Vertical baffle plate for Lion 1510/40	17.36	20.83
44133001	Base plate for Morsø 1540	206.76	248.12
44140121	Base plate for Morsø 1410	99.44	119.33
44140221	Front plate for Morsø 1410	105.10	126.12
44140521	Back plate for Morsø 1410	86.28	103.54
44140621	Side plate for Morsø 1410/2140	81.02	97.22
44140721	Top plate for Morsø 1410	48.06	57.67
44140800	Grate frame for Morsø 1410	44.55	53.46
44140921	Flue collar for Morsø 1410 -UK	27.36	32.83
44141021	Cover for Morsø 1400	18.24	21.89
44141100	Baffle plate for Morsø 1410/15	38.93	46.71
44141300	Air conductor for Morsø 1410	13.33	15.99
44141400	Front grate Morsø 1410/15/40	13.68	16.42
44141521	Leg 100 mm for Morsø 1410	11.88	14.26
44141600	Front grate fitting for Morsø	5.26	6.31
44141721	Flue collar for Morsø 1410 -Danish	21.22	25.47
44142021	Ribbed Side Panel for 1440	219.80	263.76
44142400	Outer grate frame for Morsø 1415/1440	71.38	85.66
44142800	Draft Reducer 1400	14.73	17.68
44142921	Side panel ribbed Morsø 1410/30/2130	52.09	62.51
44144421	Back plate for Morsø 1410	84.31	101.17
44144521	Back plate drilled for boiler 1410	93.13	111.75
44144621	Back plate drilled for boiler 1430	90.67	108.80
44144721	Side plate with squirrel	103.29	123.95

SPARE PARTS SUGGESTED RETAIL PRICE LIST 3rd January 2012

All orders under £200.00 (Trade) are subject to a £9.00 handling/carriage charge

ITEM NO.	ITEM NAME	EXC (VAT PRICE)	INC (VAT @ 20% PRICE)
44144800	Air conductor	33.58	40.29
44146121	Base for Morsø 1430 UK	93.34	112.01
44160521	Back plate for Morsø 1600/10	137.32	164.78
44160421	Side plate for Morsø 1600	89.42	107.30
44160800	Outer grate frame Morsø 1600	109.44	131.32
44160921	155mm Flue Collar Morsø 1600	36.48	43.78
44161001	Blanking plate for Morsø 1600	43.67	52.40
44161021	Cover 1600 senotherm painted	46.12	55.35
44161100	Inner grate frame 1610/30	107.39	128.87
44161200	Front grate for Morsø 1600/10	20.52	24.62
44161300	Air conductor for Morsø 1600	6.84	8.20
44161500	Smoke box for Morsø 1600	57.21	68.65
44161600	Smoke box cleaning cover	14.21	17.05
44161700	Baffle plate for Morsø 1600/10	51.19	61.42
44161800	Brick securing bracket 1600/30	6.14	7.37
44162300	Smoke shield for Morsø 1600	25.78	30.94
44162500	Riddling grate for Morsø 1610	41.74	50.09
44162600	Side coal grate sloping plate 1610/30	34.55	41.46
44162700	Back coal grate sloping plate 1610/30	37.71	45.25
44162800	Baffle for 1610/30	30.52	36.62
44163300	Air conductor	6.14	7.37
44163400	Air conductor left 1610	14.56	17.47
44163721	Front plate	158.89	190.67
44163821	Door for Morsø 1630	59.28	71.14
44163900	Air conductor	27.36	32.83
44164121	Back Panel 1600 drilled	93.83	112.60
44170300	Right side plate for Morsø	79.44	95.33
44180121	Base Morsø 2110 senotherm	80.15	96.18
44180221	Front 2110/2140	159.58	191.50
44180321	Leg for Morsø 2110 classic,	17.59	21.11
44180421	Back plate 2110/2140 Senotherm	69.63	83.55
44180600	Outer grate frame for Morsø	37.17	44.61
44180721	Front grate for Morsø 2110	11.23	13.47
44180800	Inside back plate 2110/40	41.91	50.29
44181100	Inside top plate 2110/40	72.61	87.13
44181221	Ash lip for Morsø 2110	29.29	35.15
44181321	Draught valve for Morsø 2110	11.41	13.69
54211300	Baffle plate for Morsø 2110	34.03	40.83
44181721	Convection plate for 2140	41.39	49.66
44181800	Outer grate frame 2140	39.47	47.36
44182100	Baffle plate for Morsø 2140	15.44	18.53
44182400	Smokeshield for Morsø 2140	7.72	9.26
44182600	Draft Reducer 2140	18.52	22.22
44182700	Grate frame for Morsø 2110/30/	48.93	58.71
44182800	Riddling grate for 2110/30/40	36.65	43.98
44183021	Back plate for Morsø 2130	123.65	148.38
44183100	Inside back plate for 2130	51.56	61.88
44183200	Inside top plate for 2130	58.40	70.08
44184521	Back Panel 2130 UK Painted	123.65	148.38
44184921	Front Grate 2110 - 3610	15.08	18.10
44185021	Base Morsø 2130 Senotherm	80.15	96.18
44202121	Leg 15 cm	16.46	19.75
44203000	Riddling grate for 1400	28.94	34.73
44203100	Inner grate frame for 1400	40.16	48.19
44203221	Leg for Morsø 1410, 25 cm	17.59	21.11
44203300	Riddling grate for 1440	30.11	36.13

SPARE PARTS SUGGESTED RETAIL PRICE LIST 3rd January 2012

All orders under £200.00 (Trade) are subject to a £9.00 handling/carriage charge

ITEM NO.	ITEM NAME	EXC (VAT PRICE)	INC (VAT @ 20% PRICE)
44254121	Handle for 1610 double door	14.73	17.68
44256700	Fitting with thread for flue	0.15	0.18
44256800	Log for plate - not threaded	0.15	0.18
44261021	Cover	37.71	45.25
44262021	Operating tool	14.48	17.37
44262721	Flue collar Ø155	39.81	47.77
44310121	Base 3100	150.55	180.66
44310221	Complete frontframe 3100	126.46	151.75
44310421	Air control 3100	14.38	17.25
44310621	Back Panel 3100 Painted	147.54	177.05
44310900	Riddling grate 3100	41.39	49.66
44311200	Air conductor 3100	28.06	33.67
44311621	Side panel 3110 fine riddes	87.92	105.51
44311721	Side Panel 3140 plain	203.26	243.91
44312821	Base 3140 - convection	165.38	198.45
44312921	Riddling Handle - 3100 and 3140	20.00	23.99
44313900	Front firebar/grate 3100	18.06	21.68
44314021	Riddling handle Ø collection	8.43	10.12
44314300	Air conductor rear 3112/3142	63.23	75.88
44314521	Base plate 3142	108.10	129.72
44314621	Front frame 3142	186.68	224.02
44315621	Base plate 3112	108.10	129.72
44331321	Knob for riddling arm	6.14	7.37
44332021	Operating tool for Morsø 1400/1600	22.45	26.94
44340121	Base 3410	156.57	187.89
44340221	Front frame 3400	111.41	133.69
44340421	Back panel 3400	147.54	177.05
44340721	Leg for 3410 owl - 210 mm	19.75	23.69
44341000	Baffle (outer) 3400	102.37	122.85
44341121	Convection side 3400 painted	183.67	220.40
44341300	Inside side panel with owls	81.02	97.22
44341421	Base 3440	161.87	194.25
44341700	Inside rear plate 3400	72.08	86.50
44344021	Outside side panel with owls	81.02	97.22
44345121	Rear plate 3400, cast iron	153.56	184.27
44361500	Inside side baffle, right 3600	95.41	114.49
44362400	Front grate for side door 3600	13.56	16.27
44362600	Cast iron Baffle 3600	146.97	176.36
44450221	Front plate 4500	97.26	116.71
44450421	Back plate 4500	81.75	98.10
44450600	Bottom Grate Frame 4600	78.39	94.07
44450721	Front grate for Morsø 4500	19.47	23.36
44451200	Inside back plate 4500/4600	71.56	85.87
44460321	Side panel 4600 black	98.56	118.27
44500121	Base plate for Morsø 5040	69.10	82.92
44500221	Front plate for Morsø 5000	56.82	68.19
44500621	Outer grate frame 5000/6000	51.74	62.09
44500721	Front grate for 5000/6000	16.13	19.36
44500800	Inside back plate 5000/6000	47.01	56.41
44500921	Side panel with swan painted for 5010	86.64	103.97
44501021	Door for Morsø 5000	66.30	79.56
44501100	Inside top plate for 5000	71.90	86.29
44501221	Ash lip for Morsø 5000	36.48	43.78
44501621	Convection grate for 5000	12.10	14.52
44502421	Back plate 5000	119.53	143.44
44610500	Inside top 6100	55.70	66.84

SPARE PARTS SUGGESTED RETAIL PRICE LIST 3rd January 2012

All orders under £200.00 (Trade) are subject to a £9.00 handling/carriage charge

ITEM NO.	ITEM NAME	EXC (VAT PRICE)	INC (VAT @ 20% PRICE)
44610621	Top frame 6100	35.84	43.00
44610921	Outside top plate	56.46	67.75
44611300	Top air conductor 6100	40.65	48.78
53000621	Right Door Complete - Ø8	113.29	135.95
53000721	Left Door Complete - Ø8	164.08	196.89
53000921	Slide Bar for Ø4 & Ø6	28.24	33.89
53001021	Complete Door - Ø4	211.57	253.89
53001500	Riddling Handle Ø6	2.46	2.95
53001921	Cover for Ø6 & Ø8	16.76	20.11
53003021	Complete Door - Ø6	281.94	338.33
53003821	Slide Bar Ø8	39.81	47.77
53006821	Cover plate securing bar Ø4	15.64	18.77
53008100	Riddling Handle Ø4	2.46	2.95
53008400	Riddling Handle Ø8	2.46	2.95
53009200	Bottom Heat Shield Ø4	18.13	21.76
53009300	Bottom Heat Shield Ø6	18.13	21.76
53009400	Bottom Heat Shield Ø8	19.11	22.93
53056500	Hinge Pin Ø5x65 mm	2.80	3.36
54093500	Side brick 1600 Old	6.62	7.95
54141600	Set of Heat Shields 1400 UK	14.03	16.84
54142521	Convection rear plate	46.82	56.19
54143700	Distance tube	1.57	1.89
54144400	Distance tube	1.57	1.89
54149621	Complete Door 1430 "New" type	177.65	213.18
54149721	Complete Ash Door 1410/1430	74.22	89.06
54160321	Complete door for 1600/1610	304.11	364.93
54161600	Set of Heat Shields 1600	14.03	16.84
54162221	Complete door 1610 right	182.21	218.65
54162321	Complete door 1610 left	143.63	172.36
54163021	Complete front frame 1600	62.96	75.55
54181400	Ash Can 2100 series	24.37	29.25
54310100	Ash can 3100	15.26	18.31
54310721	Complete top 3100	110.31	132.37
54311321	Complete top 3140	110.31	132.37
54312000	Riddling arm 3100	15.44	18.53
54312400	Angle Brace for baffle 3100	7.72	9.26
54312521	Convection back plate 3100	20.87	25.04
54312600	Radiant plate - rear 3100	10.87	13.04
54312700	Base - radiation shield 3100	16.83	20.20
54312821	Door complete 3100	397.76	477.31
54314221	Top plate 3142	110.66	132.79
54314721	Rear radiant sheild 3142	43.81	52.58
54315521	Top Plate 3112	110.66	132.79
54340000	Radiant shielding, base	10.87	13.04
54340521	Complete top 3410	147.54	177.05
54340921	Door complete 3400	385.41	462.49
54341221	Complete top 3440	158.54	190.25
54344100	Convection back plate 3400	15.60	18.73
54344121	Convection rear plate	20.87	25.04
54344400	Back panel 3400 CB	68.40	82.08
54344600	Ridding arm 1440	11.15	13.38
54360221	Radiant shielding, base 3600	88.67	106.41
54362300	Brass bush 3600 Left door	8.28	9.94
54451821	Trim 4560	298.24	357.88
54452221	Steel convection box 4560	368.55	442.25
54460021	Side plate Morsø 4600 black	72.25	86.70
54460321	Back plate Morsø 4600 black	57.81	69.37

SPARE PARTS SUGGESTED RETAIL PRICE LIST 3rd January 2012

All orders under £200.00 (Trade) are subject to a £9.00 handling/carriage charge

ITEM NO.	ITEM NAME	EXC (VAT PRICE)	INC (VAT @ 20% PRICE)
54460521	Top plate for Morsø 4600	161.00	193.20
54460800	Hinge pin 5 x 90	1.57	1.89
54461021	Log drawer for Morsø 4600	185.78	222.94
54462021	Door Complete 4600 - black	387.58	465.10
54501721	Outside top for Morsø 5000	178.70	214.45
54530121	Steel convection box 5060	269.33	323.20
54530221	Trim for Morsø 5060	214.66	257.60
54710200	Handle 7100	20.47	24.57
54814921	Flue pipe adapter 8100	106.43	127.72
71001700	Ash can Ø6	52.96	63.55
71001800	Ash can Ø8	60.09	72.11
71008300	Ash can Ø4	31.59	37.91
71180200	Draught Control 2100	27.36	32.83
71180300	Draught Control Arm 2100	22.45	26.94
71180400	Draught Control Frame 2100	7.36	8.83
71312100	Shaking handle 3100	16.83	20.20
71312200	Secondary Handle lever 3100	43.32	51.98
71312800	Spring for hand lever 3100	13.25	15.90
71312900	Axle for handle	37.17	44.61
71313900	Riddling arm 3112/3142	3.16	3.79
71346161	Baffle 3400 CB stainless steel	103.65	124.38
71346200	Back plate 3400 - convection	68.22	81.86
71346300	Draught control	10.00	12.00
71361061	Steel baffle inside top 3600	56.82	68.19
71611100	Air control handle 6100	40.95	49.14
71611261	Air control link 6100	16.86	20.23
71810021	Left leg 4600/6000	34.37	41.25
71820021	Right leg - 4600/6000	34.37	41.25
71814561	Long glass clips 6100/8100/Ø collection	0.12	0.15
73001661	Handle Ø4/Ø6	16.69	20.03
73007200	Locking Plate Ø4/Ø6	2.10	2.52
73007561	Door Handle Ø8	16.69	20.03
73041600	Screw	0.60	0.72
73166000	Black steel screw 06x60	0.60	0.72
73500601	Lock nut M6	0.91	1.09
73500602	Lug nut	0.09	0.11
73961601	Black stud bolt 06x16	1.57	1.89
73990400	Allen Key, 2,5 mm	3.16	3.79
74142500	Screw 4x25	0.09	0.11
74143000	Screw 4x30	0.09	0.11
74162000	Screw 6x20	0.15	0.18
74163504	06 x 35 screw SIN	0.18	0.22
74202000	Cotter Pin	0.12	0.15
74241800	Screw 4x8	0.09	0.11
74241900	Screw	0.18	0.22
74361000	Screw 6x10	0.18	0.22
74620400	Washer	0.12	0.15
75180400	Stainless steel handle	5.79	6.94
75462700	Door axle for Morsø 4600, 3400, 3100	36.13	43.36
79000100	Door Glass Ø4	66.61	79.93
79000200	Door Glass Ø6	98.39	118.07
79000300	Door Glass Ø8	62.83	75.39
79001000	Rear Brick Ø6	10.52	12.63
79001200	Side Brick Ø6	16.63	19.96
79004700	Rear Brick Ø8	9.51	11.41
79004800	Side Brick Ø8	17.79	21.35

SPARE PARTS SUGGESTED RETAIL PRICE LIST 3rd January 2012

All orders under £200.00 (Trade) are subject to a £9.00 handling/carriage charge

ITEM NO.	ITEM NAME	EXC (VAT PRICE)	INC (VAT @ 20% PRICE)
79006900	Rear Brick Ø4	7.12	8.55
79007000	Side Brick Ø4	11.82	14.19
79048800	Spring	2.17	2.61
79074600	Baffle Insulation	29.29	35.15
79074900	Carbowool blanket 3600	10.00	12.00
79075000	Carbowool blanket 3600	13.33	15.99
79094700	Side brick 1440	18.77	22.52
79118200	bakelite handle 36 mm	4.03	4.84
79118300	Bakelite handle 72 mm	7.02	8.42
79127000	Clasp - w/o handle	14.56	17.47
79127200	Locking Device	21.39	25.67
79186300	Cotter Pin 05x30	0.12	0.15
79189300	Washer 30x6,4x125	0.09	0.11
79189400	Washer	0.09	0.11
79189500	Washer	0.09	0.11
79189600	10mm washer	0.12	0.15
79310000	Door glass for Morsø 3100	66.24	79.49
79311000	Side brick for 3100	21.93	26.31
79311100	Back brick 3100 standard	11.41	13.69
79311300	Side brick vermiculite 3112/3142	22.13	26.56
79311400	Back brick vermiculite 3112/3142	19.58	23.49
79340000	Door glass Morsø 3400	70.15	84.18
79341000	Rear Side brick 3400	7.36	8.83
79341100	Front side brick 3400	13.33	15.99
79341200	Rear brick - 3400	5.97	7.16
79360100	Door glass 3600 w/o reflection	55.96	67.15
79360300	Brick 3600 - rear	28.41	34.09
79463600	Door glass for Morsø 4600	161.17	193.40
79610100	Door glass for Morsø 6100	189.40	227.28
79610200	Side brick R/H vermiculite 6100	18.07	21.68
79610300	Side brick L/H vermiculite 6100	18.07	21.68
79610400	Back brick vermiculite 6100	9.03	10.84
79610500	Lower baffle vermiculite 6100	18.07	21.68
79610600	Upper baffle 6100	12.04	14.45
79710100	Back brick vermiculite 7100	16.57	19.88
79710200	Side brick R/H vermiculite 7100	13.10	15.72
79710300	Side brick L/H vermiculite 7100	13.10	15.72
79710500	Insulation pad 7100	16.71	20.06
79810100	Door glass 8100	275.51	330.61
79810300	Side brick R/H vermiculite 8100	18.82	22.58
79810400	Side brick L/H vermiculite 8100	18.82	22.58

GAS SPARES

3000097	Pilot burner complete for Morsø 551/552/553	34.91	41.89
720A575	Nat gas pilot injector for Morsø 551/552/553	5.56	6.67
720A195	LPG Pilot injector for Morsø 551/552/553	4.76	5.71
97400280	Thermocouple for Morsø 551/552/553	9.52	11.42
720A331	Injector elbow for Panther 553	11.11	13.33
720K988	Injector elbow for Squirrel 552/553	11.11	13.33
30002710	Vent switch for Morsø 551/553	28.56	34.27
30002850	Ceramic wall set for Panther 553	79.34	95.20
30002670	Ceramics wall set for Squirrel 551/552	47.60	57.12
51105280	Complete ceramic coal set for Squirrel 551/552	111.07	133.29
000B3290	Complete ceramic coal set for Panther 553	190.41	228.49




Morsø UK Ltd

Unit 7, The io Centre, Valley Drive, Swift Valley
Rugby, Warwickshire CV21 1TW

Tel: 01788 554410 Fax: 01788 554411

CVR no: 1631 4285 VAT no: 846 8374 82 Reg. No: 05338805

www.morsoe.co.uk

 Like us on Facebook: www.facebook.com/morsouk

Design & Print: www.c9dd.com CD5386



By appointment to The Royal Danish Court

morsø